

# Mini Hoist



## BMW 3 Series Tourer Mini Hoist Fitting Instructions MHFK 339



Interior prior to install



Remove the floor covers



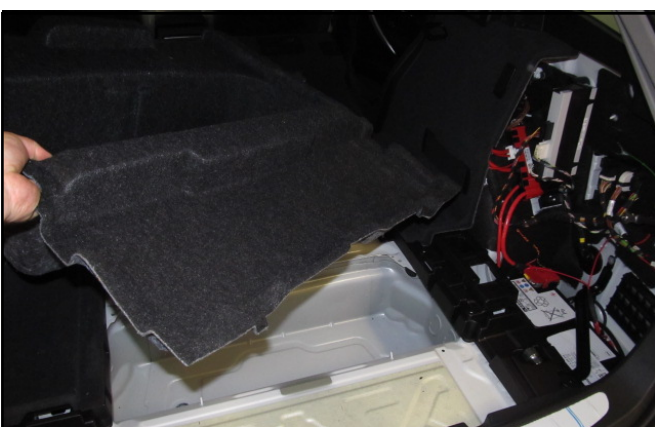
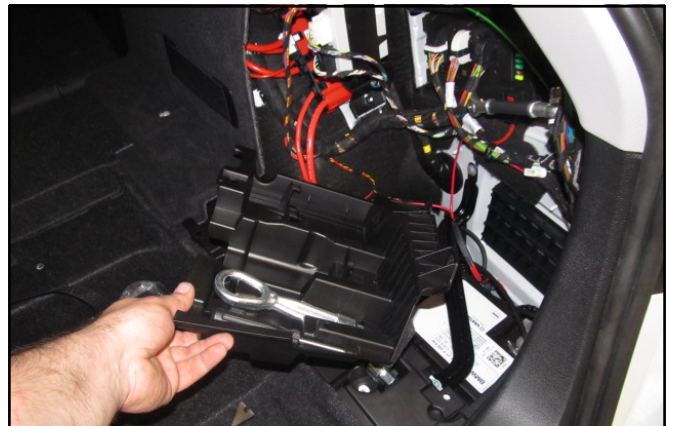
Fold down the rear seats and remove the luggage cover



Remove the pins securing the side cover then remove the side cover



Unscrew then remove the plastic insert



Remove the floor cover







Unscrew and remove the front right hand luggage tie down lug



Replace the lug with the hexagon spacer with studding shown



Remove this plastic insert



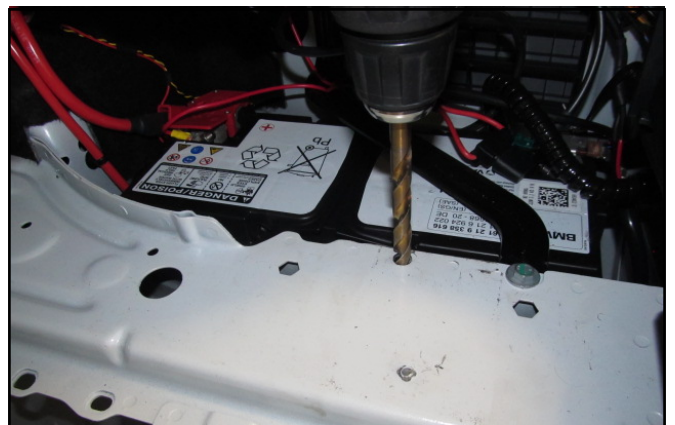
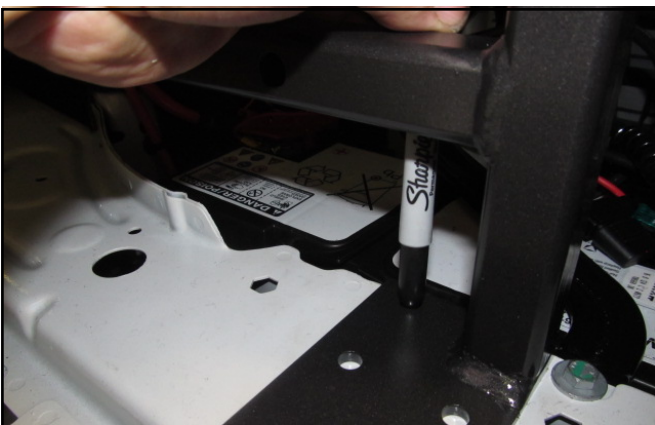
Break off this pin



Locate the front mounting of the frame onto the spacer



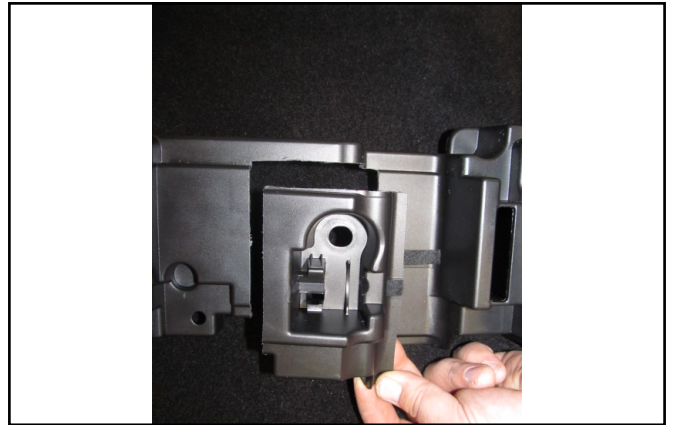
Position the rear mounting as shown and drill the hole shown to 9mm



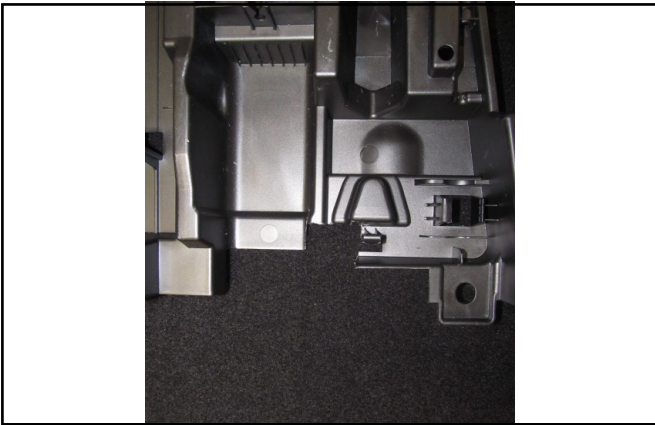




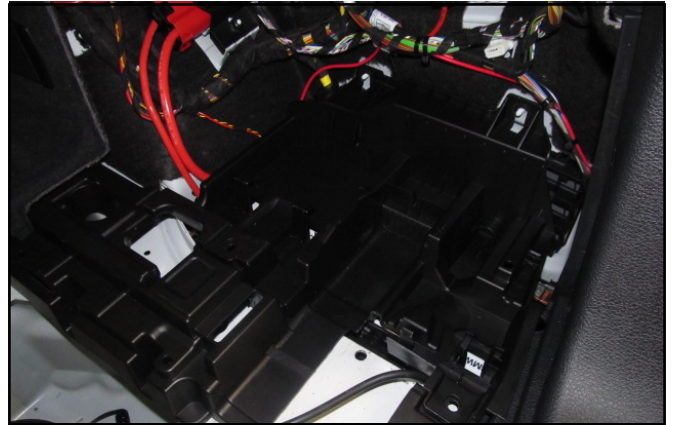
Temporarily remove the spacer for the front mounting to improve access behind side panel



Trim this plastic insert as shown



Also trim this insert as shown



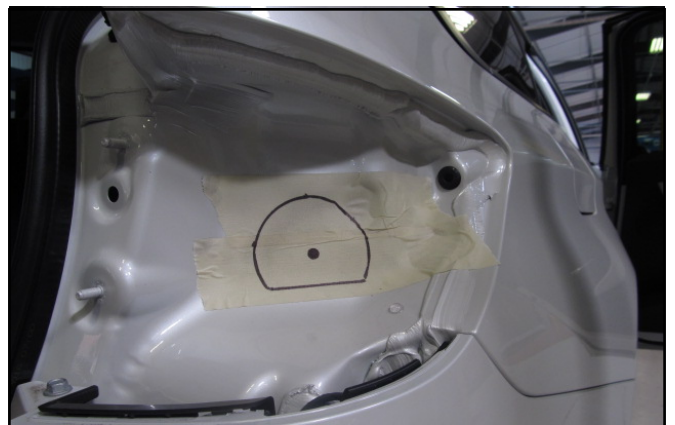
NOTE: Before refitting plastic inserts route the power cable to the battery. Now refit inserts



Remove the right hand rear light cluster then mark and drill a 10mm where shown for the



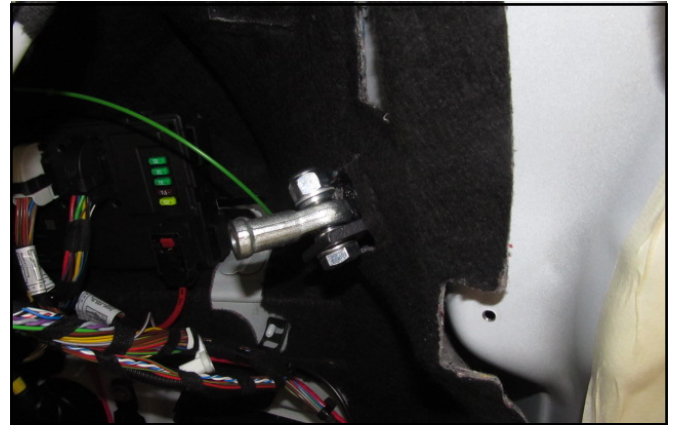
mounting of the spreader plate



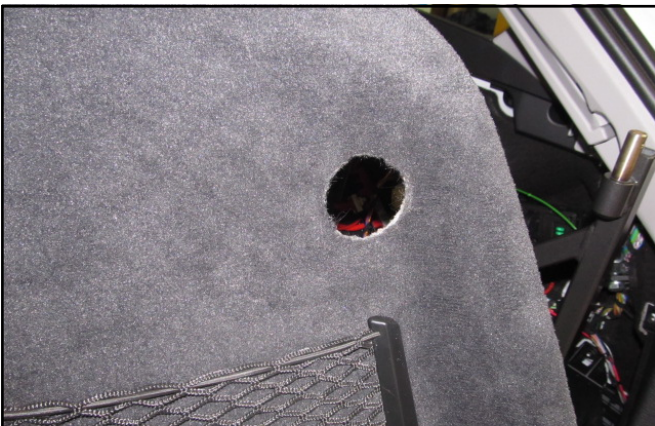




Fit the bracket shown on the inside of the vehicle tightening it from the outside



Refit the light cluster then refit the side cover around the bracket



Cut a clearance hole in this side panel and refit



Place the frame back in position and fully secure all 3 mountings. Trim and refit the floor covers







Assemble the Hoist and adjust to suit the application. Power should be taken direct...



from the vehicle battery via an inline fuse

