



Move Freely, Live Fully

**ACCESSIBILITY
IS ABOUT**

Freedom



Research shows **wheelchair users still face major barriers** navigating public spaces from rough paths to steep slopes. Traditional **wheelchairs often get stuck** or limit users to indoor spaces.



That's why we provide products built for more than mobility. They're built for full participation.

Trekinetic GTE

All-Terrain Power Wheelchair

Goes where you want to go.

80%

Of wheelchair users experience significant challenges navigating rough terrain like:



Sand



Gravel



Rocky Paths



Steep Slopes

Traditional wheelchairs, while effective on smooth indoor surfaces, often leave users feeling restricted and disconnected from outdoor life.

Ref. (Kim et al., 2012)



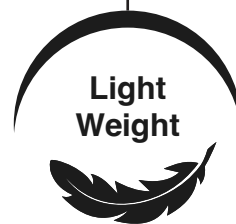
Designed for adventurers

The Trekinetic GTE changes everything giving users full control without compromise.

If you want to move beyond limitations, the GTE is your perfect companion.



Compact
& Portable



Light
Weight



What makes it different?

- ✓ Ultra-light carbon fibre frame (34kg with battery)
- ✓ Three-wheel front-drive system
- ✓ Varicam adjustable wheelbase: indoor or offroad
- ✓ Switch between powered and manual mode
- ✓ Patented reclining shock absorber seat
- ✓ Removable, air-travel safe lithium battery (30km range)
- ✓ NDIS Approved and Crash-Tested for Transport Safety

Trekinetic K2

All-Terrain Manual Wheelchair

Push further. Go anywhere.

Built with cutting-edge Formula 1 materials and designed for both urban life and outdoor exploration, the Trekinetic K2 is not your average wheelchair. With a carbon fibre seat, patented suspension and 3-wheel stability, the K2 takes you places traditional chairs can't.



Why you will love it?

- ✓ **Lightweight carbon fibre seat** starting at just 15.6kg
- ✓ **Crash-tested to ISO 7176-19** safe to use during vehicle travel
- ✓ **Three-wheel design** excellent grip and balance on uneven terrain
- ✓ **Folds down easily** fits in most car boots; wheels pop off at the push of a button
- ✓ **Rear shock absorber** smooth ride, better posture and downhill safety
- ✓ **Available in 40cm, 44cm and 48cm seat widths**
- ✓ **Patented Varicam system** adjusts wheel camber (0–16°) in seconds
- ✓ **Custom options available** including growth kits, headrests and seat liners



Whether you're navigating gravel paths, snow trails or city kerbs

The Trekinetic K2 gives you freedom without compromise.

Trekinetic K2

Trekinetic GTE

Manual 3 Wheel Drive System	Electric 3 Wheel Drive System
Carbon Fiber Seat	Carbon Fiber Seat
Nitrogen Shock Absorber	Nitrogen Shock Absorber
Tilt in Space	Tilt in Space
Varicam System	Varicam System
Choice of tyres	Choice of tyres
Handrims	5 Speed Joystick
Dynamic Brakes	Manual/Power Toggle
Weight from 15 kg	Weight from 34 kg

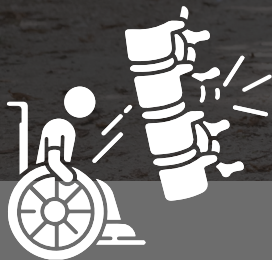


All-Terrain Manual & Power Wheelchair

Light Drive Power Assist for Manual Wheelchairs

Still you. Just powered.

31–73%



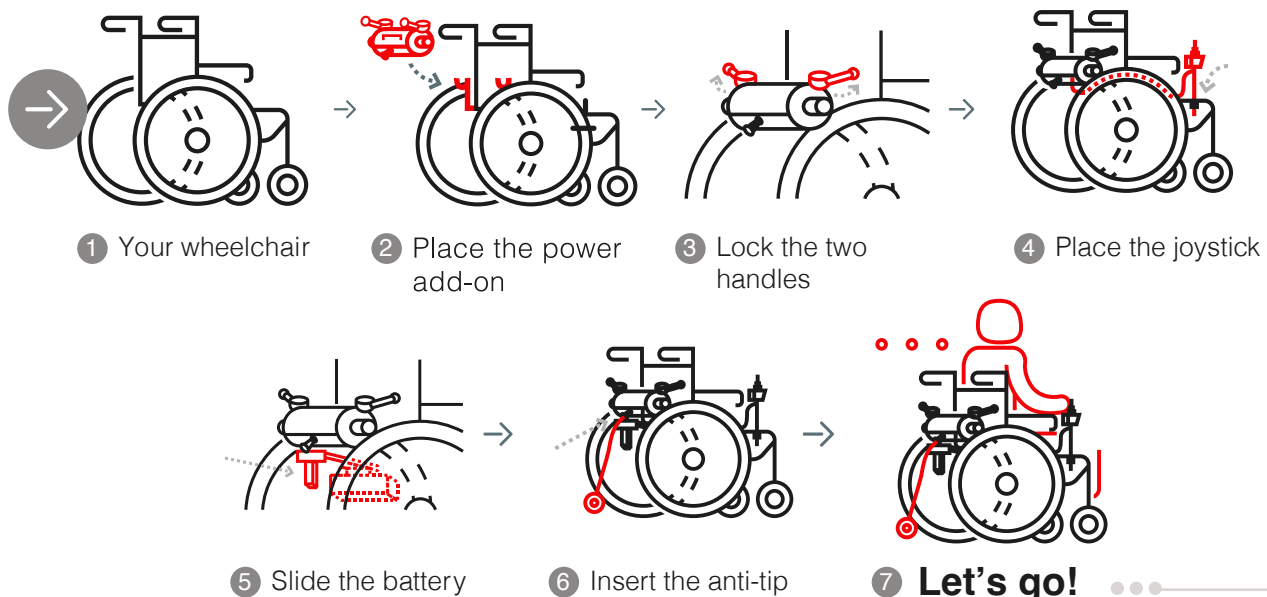
of manual wheelchair users with spinal cord injuries experience shoulder pain, which can lead to long-term injury and reduced daily function.

Manual wheelchairs provide independence but at a cost.

Over 1.5 million people rely on them, but constant self-propelling puts strain on shoulders and arms.

The Light Drive offers solutions without changing your lifestyle.

How Does It Work?



Ref. (Hurd et al., 2008). Hurd WJ, Morrow MM, Kaufman KR, An KN. Influence of varying level terrain on wheelchair propulsion biomechanics. *Am J Phys Med Rehabil.* 2008 Dec;87(12):984-91. doi:10.1097/PHM.0b013e31818a52cc.

What makes it different?

- ✓ Converts your manual chair into a powered one, fast and easily
- ✓ Reduces strain on shoulders, arms and joints
- ✓ Lightweight, travel-friendly, easy to remove
- ✓ Fits most rigid or folding manual chairs
- ✓ USB port for device charging on the move
- ✓ Switch between manual and powered modes



Light Drive 2.1
is lightweight,
removable
and easily
transportable.

Why you will love it?


Lightweight
and easily
transportable


Adapts to all
wheelchairs*
*See the compatibility
guide


Instant
installation


Indoors/
Outdoors


Range up
to 20 km


Made in
France


Removable


Can be
transported by
plane*
Optional 11.4 Ah lithium-
ion battery

Available in

Light Drive 2.1 XL

For bariatric users, without the bulk

- ✓ Designed for users up to 160kg
- ✓ Delivers powerful, smooth electric drive
- ✓ Keeps your manual chair compact and portable

**For those who need extra
support without giving up
independence.**



Light Assist² Companion Operated Power Add-on



Power assist for those who push, not just those who ride.

Whether you're a carer, a nurse or a family member, pushing a manual wheelchair can quickly become tiring & unsafe, especially on hills or uneven terrain.

That's where Light Assist² steps in.

- ✓ Easy to push with less effort for the carer
- ✓ Handles hills and kerbs thanks to extended handles and engine braking
- ✓ Speed control keeps things smooth and safe on slopes
- ✓ Compact and fits most wheelchairs



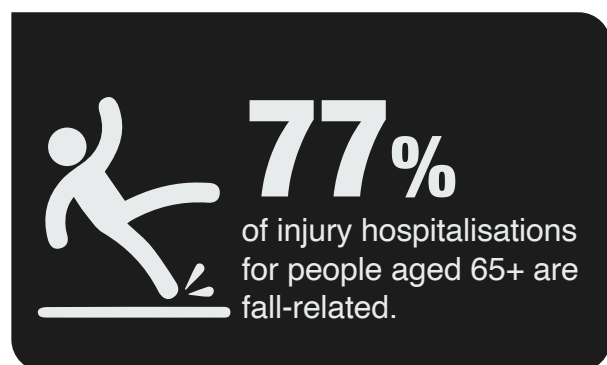
**Set-up
in 15 seconds**



From navigating hospital corridors to strolling outdoors, **Light Assist² makes movement easier, safer and more dignified for both you and the person you care for.**

Understanding Falls & Staying Independent

Falls are a major cause of injury and hospitalisation among older Australians.



MobilityCare solutions are designed to reduce fall risk and support independence for older adults, people with neurological conditions such as Parkinson's or MS, and those managing stroke recovery, arthritis, balance challenges or post-surgical mobility.

Ref: (AIHW, 2023) Australian Institute of Health and Welfare, 2023. Falls in older Australians.

TOPRO Troja 5G Rollator

Comfort, control and style in every step

- ✓ Shock-absorbing wheels smooth out rough or uneven paths
- ✓ Lightweight and foldable design makes it easy to transport
- ✓ Ergonomic handles support natural posture and reduce strain
- ✓ Handle height memory ensures quick and consistent setup
- ✓ Tilt assist makes kerbs and thresholds safer to cross



Available in

TOPRO Olympos Off-Road Rollator

Built for uneven terrain



Large front wheels, shock-absorbing tyres and a foldable frame make it both rugged and practical.

- ✓ Lightweight frame with compact, easy-to-fold design
- ✓ Ergonomic handles with memory height adjustment
- ✓ Secure brakes and one-handed brake option



TOPRO Troja Forearm Walker

Designed for upper body support while walking

The Troja Walker is designed for comfort, stability and posture. Its ergonomic forearm rests and upright frame provide secure, supported mobility without compromise.

- ✓ Forearm supports promote upright posture and stability
- ✓ Ergonomic forearm supports with memory height adjustment
- ✓ Secure dual brake system with simple one-lever control



LiftSeat

Powered Toilet Lifts

Regain Independence in the Bathroom

LiftSeat toilet lifts support individuals who struggle to sit or stand from the toilet. Ideal for those recovering from surgery or living with conditions such as muscular dystrophy, myositis, or motor neurone disease.

Designed for



Home



Rehab



Aged care



Why you will love it?

- ✓ Raises and lowers you gently and safely
- ✓ Reduces falls and carer strain
- ✓ Encourages independent toileting
- ✓ Can be used with your own toilet or as a bedside commode
- ✓ Easy to set up, no tools needed, no installation

Model Options

LiftSeat Home

Supports safe sitting and standing

- ✓ Smooth sit-to-stand motion supports natural body movement
- ✓ Ideal for users who need extra help getting up and down
- ✓ Familiar movement pattern (like rise-and-recline chairs)
- ✓ Safe Working Load: 145 kg (Home), 205 kg (Bariatric model)



LiftSeat Vertica

Ideal for users who need to lock knees before standing

- ✓ Lifts vertically with no tilt
- ✓ Offers maximum stability and controlled rising
- ✓ Safe Working Load: 145kg (Vertica), 205kg (Vertica Plus)



Autochair Smart Lifter LP

LIFT. LOAD. GO.

45,000
satisfied
users
worldwide



**Lift & load mobility
scooters & powerchairs
in seconds**



Mobility aids like scooters and powerchairs help people stay active but lifting them in & out of a car can be a barrier to independence.

75% of carers assisting someone with mobility limitations report physical strain while lifting heavy equipment.

Ref: Australian Institute of Health and Welfare, 2020

**That's where the
Autochair Smart
Lifter LP comes in.**

Why thousands of people choose it

- ✓ Lifts up to 200kg
- ✓ Lifts all types of scooters and powerchairs
- ✓ 4-way crane action makes lifting and lowering smooth & controlled
- ✓ Folds compactly & can be transferred to your next vehicle
- ✓ Fully adjustable reach, spread & height

Lifting capacity

150
KGS

200
KGS

How it Works



1. Attach and lift your mobility scooter to the hoist.




2. Guide it gently as the hoist raises your device.



3. Stow securely in the vehicle, ready to go.

Fits in



MPVs	4x4s	Estates	Vans
			

Available in

Smart Lifter LC

Ideal to lift mid-sized scooters or wheelchair



Lifting capacity



Smart Lifter LM

Ideal to lift mini scooters or wheelchair

Lifting capacity



Smart Transfer Person Lift

No Lifting, No Strain,
No Vehicle Modifications.

Manual transfers often pose risks of falls, musculoskeletal injuries & emotional distress, not only for the user but also for carers and family members.

(WHO, 2022)

Fits in

MPVs



4x4s



Estates



Vans



Saloons



Convertibles



With just two buttons, the Smart Transfer safely lifts the user from their wheelchair into the vehicle in seconds.

- ✓ Supports independence and safe travel
- ✓ Fits almost any vehicle: sedans, SUVs, 4WDs & Vans
- ✓ Works for drivers or passengers
- ✓ 150kg lifting capacity
- ✓ Easily removed or moved to a new vehicle



How it Works



1. Attach to the lifting arm



2. Use the button to transfer into the seat



3. Unclip the sling and stow the lift

Specifications

Maximum Lifting Weight	150 kg
Total Height Range	47.3cm
Power Supply	12v
Lifting Arm Weight	8.16kg

NDIS Approved
Made from Lightweight Aluminum
CE Marked

Navigating Neurological Conditions & Regaining Control

Living with neurological disorder shouldn't limit your freedom.

UP TO
60% of people with Parkinson's experience freezing episodes and falls

Ref: Nieuwboer et al., 2007).

Specialised walkers and cueing devices improve confidence, safety and mobility keeping you engaged with life.

U-Step 2 Neuro Walker Built Specifically For Neurological Conditions

Manoeuvrability. Stability. Confidence.

Specifically designed for Parkinson's, MS, Motor Neurone Disease and similar neurological conditions, the U-Step 2 provides unmatched support where traditional walkers fall short.

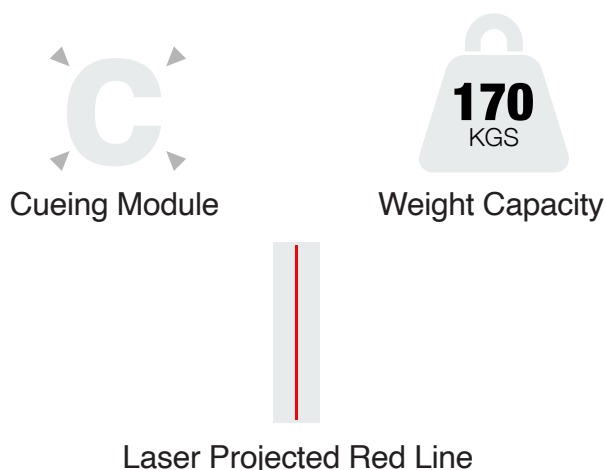
Why you will love it?

- ✓ **Manoeuvrability** 7-wheel design and tight turning circle for easy navigation
- ✓ **Stability** U-shaped frame keeps you secure in all directions
- ✓ **Tension Control** Adjustable resistance for smooth movement on any surface
- ✓ **Reversed Braking** Moves only when brakes are squeezed
- ✓ **Freezing of Gait** Optional cueing module helps initiate walking
- ✓ **Easy Folding** Folds in two steps with no bending required



Visual and auditory cueing (like U-Step's laser module) improves mobility and stride in Parkinson's reducing freezing and fall risk.

Custom options



Platform Model

For those with limited hand dexterity or upper limb strength

- ✓ Provides forearm support for better comfort and posture
- ✓ Ideal for users with arthritis or advanced neurological decline



Press Down Brake Model

For users who find squeezing hand brakes difficult

- ✓ Applies the brake when downward pressure is applied
- ✓ Designed for individuals with hand tremors or limited grip strength



InStep LaserCane

Simple Walking Assistance
with Laser Cueing

Topro Neuro Parkinson's Rollator

Designed for Parkinson's and other neurological conditions

The TOPRO Neuro is built to enhance stability, prevent falls & provide greater control for people living with neurological conditions.



Why you will love it?

- ✓ **Reverse braking system** keeps the walker safely in place until you're ready to move
- ✓ **Ergonomic handles**
- ✓ **Safe posture** is promoted by walking inside the frame, not behind it
- ✓ **Compact & portable** folds flat for transport or storage
- ✓ **Built for everyday life** reliable across indoors, travel and community outings
- ✓ **7-year warranty** with long-lasting Norwegian design
- ✓ **Optional one-handed brake** accessory for added accessibility





(03) 9568 8383

enquiries@mobilitycare.net.au

Australia-wide dealer support

www.mobilitycare.net.au

Scan the QR code to browse
our full range

